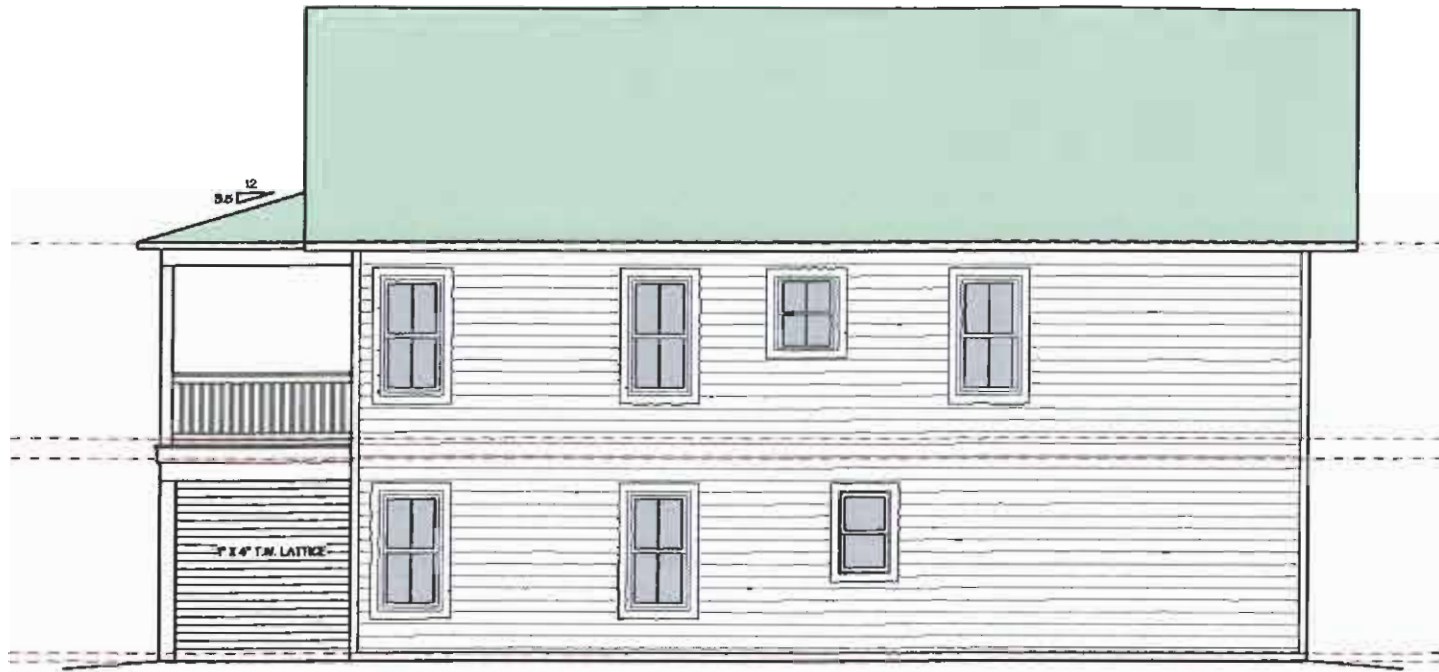


# Kitty Hawk II

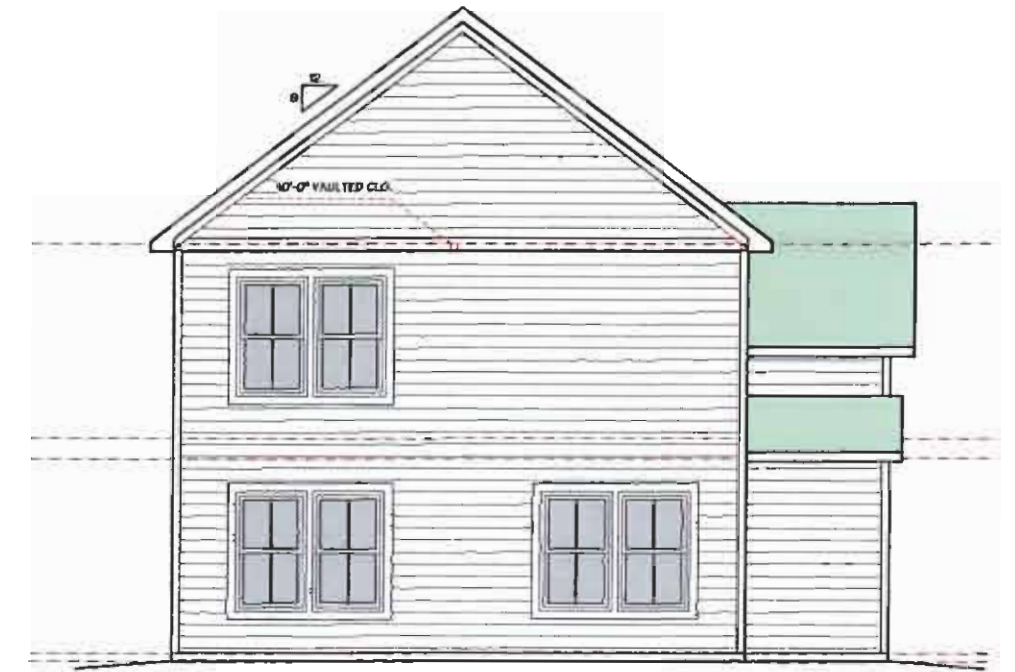


**FRONT ELEVATION**

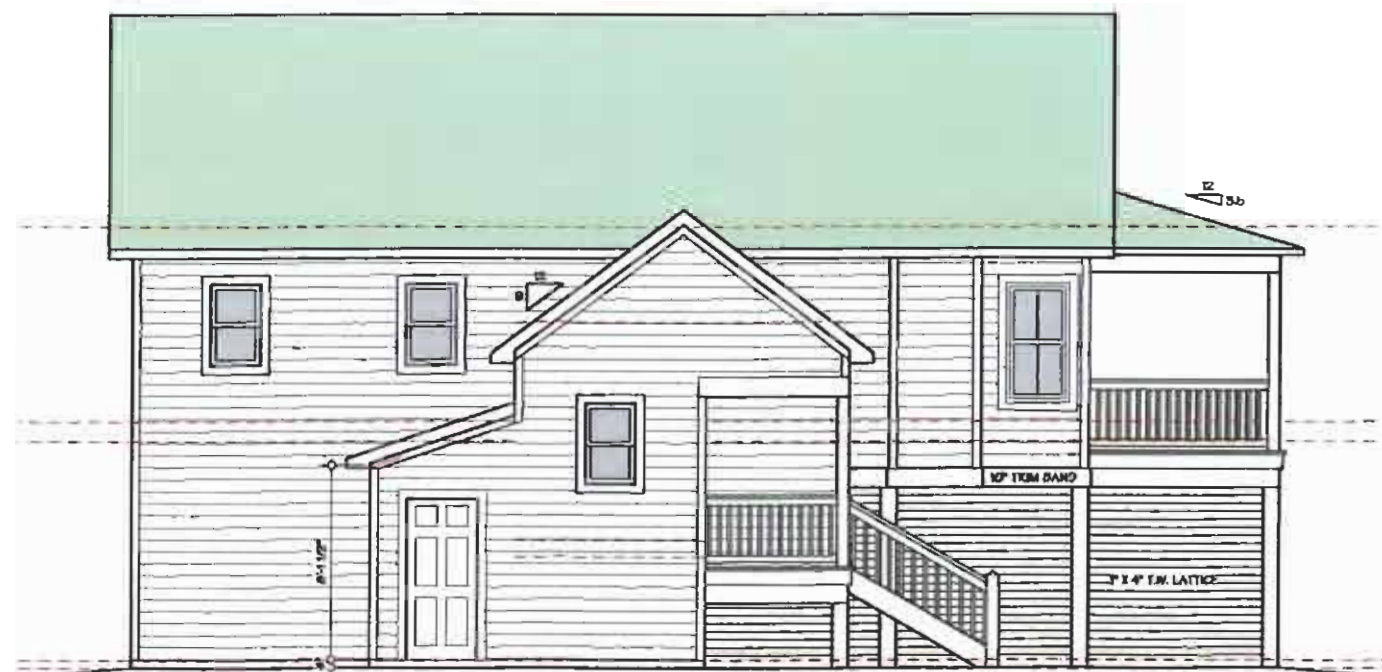
INDEX				AREA SCHEDULE		ABBREVIATIONS			
SHEET NO	SHEET TITLE	SHEET NO	SHEET TITLE						
	ARCHITECTURAL		STRUCTURAL	FIRST FLOOR	1008 SQ.FT.	ADV. = ABOVE	EA = EACH	OC = ON CENTER	U.O.M. = UNLESS OTHERWISE NOTED
				GROUND FLOOR	761 SQ.FT.	A.F.F. = ABOVE FINISHED FLOOR	EQ = EQUAL	P.K.T. = JOCKET	VB. = VAPOR BARRIER
1	COVER SHEET	51	FOUNDATION PLAN & DETAILS	TOTAL HEATED AREA	1769 SQ.FT.	DB. = DOARD	EXP. JT. = EXPANSION JOINT	PL = PLATE	WO. = WOOD
2	GROUND & FIRST FLOOR PLAN	52	ROOF, CEILING, & FRAMING PLANS	COVERED PORCH	192 SQ.FT.	DF. = DRY OLD	EXT. = EXTERIOR	POLY. POLYSTYRENE	WF = WITH
3	ELEVATIONS			ENTRY PORCH	36 SQ.FT.	BLK. = BLOCK	F.F.O.C.S. = FIRE/OILS	P.T. = PRESURIZED TREATED	W/O.M. = WELDED WIRE MESH
4	SECTIONS & DETAILS			TOTAL COVERED PORCHES	228 SQ.FT.	B.M. = BEAM	FD. = FLOOR DRAIN	P.W. = PLYWOOD	ε = ANGLE
				STORAGE	36 SQ.FT.	BRG. = BRACING	F.F.E. = FINISHED FLOOR ELEVATION	REBAR = EPOXY COATED STEEL BAR	
				OPTIONAL DECK	00 SQ.FT.	C.L. = CENTER LINE	FIN. = FINISH	REJ. = REINFORCER	
						CL. = CENTER LINE	FLOOR = FLOOR	REIN. = REINFORCED	
						C.O. = CABLE OPENING	FT. = FOOT	RTES. = RAY TRAYS	
						COL. = COLUMN	FTO. = FOOTING	RTN. = RETURN	
						CONC. = CONCRETE	GALV. = GALVANIZED	RS. = (5) RISERS	
						CONT. = CONTINUOUS	GRD. = GROUND	W 15 = WOOD TRIM	
						C.M.U. = CONCRETE MASONRY UNIT	GR. = GRAND STAIRS	W.D. = WOOD DOOR	
						C.L. = CONDENSING UNIT	G.W.B. = GYPSUM WALL BOARD	W.T.C. = WHEATHING	
						DBL. = DOUBLE	H.D. = HEDGE END	WHWC. = WHEATHING	
						DEG. = DEGREE	INT. = INTERIOR	SG. FT. = SQUARE FEET	
						DET. = DETAIL	JST. = JOIST	SG. FT. = SQUARE FEET	



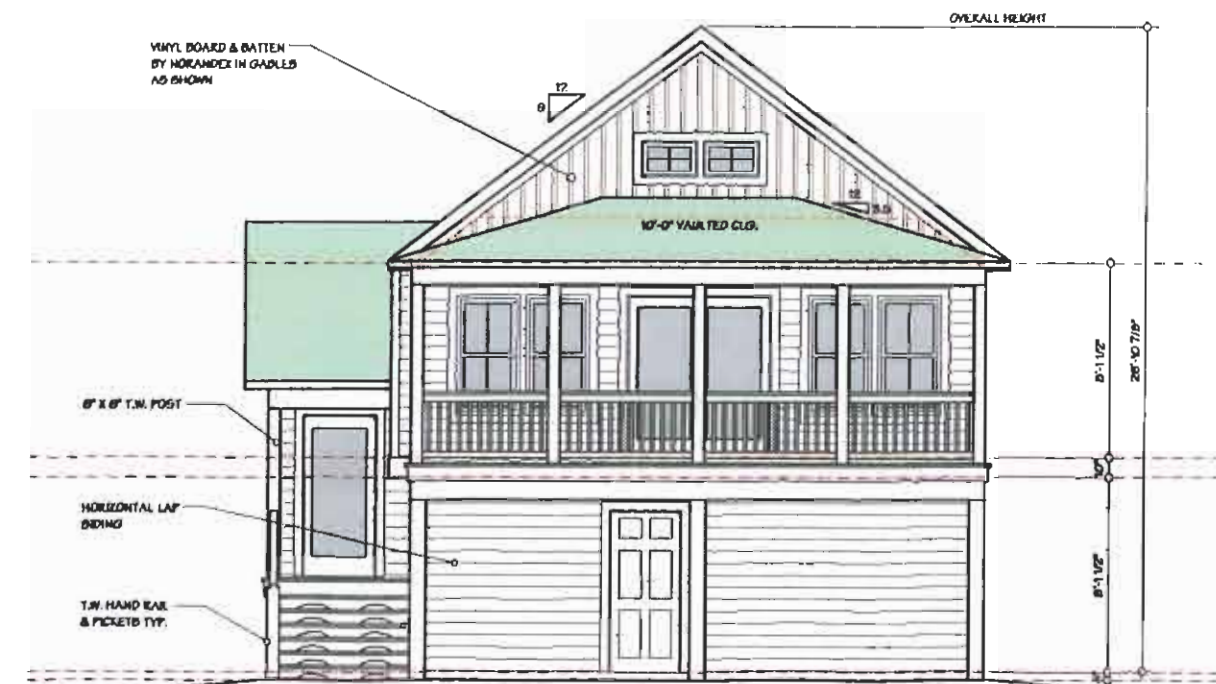
**RIGHT SIDE ELEVATION**  
SCALE: 1/4" = 1'-0"



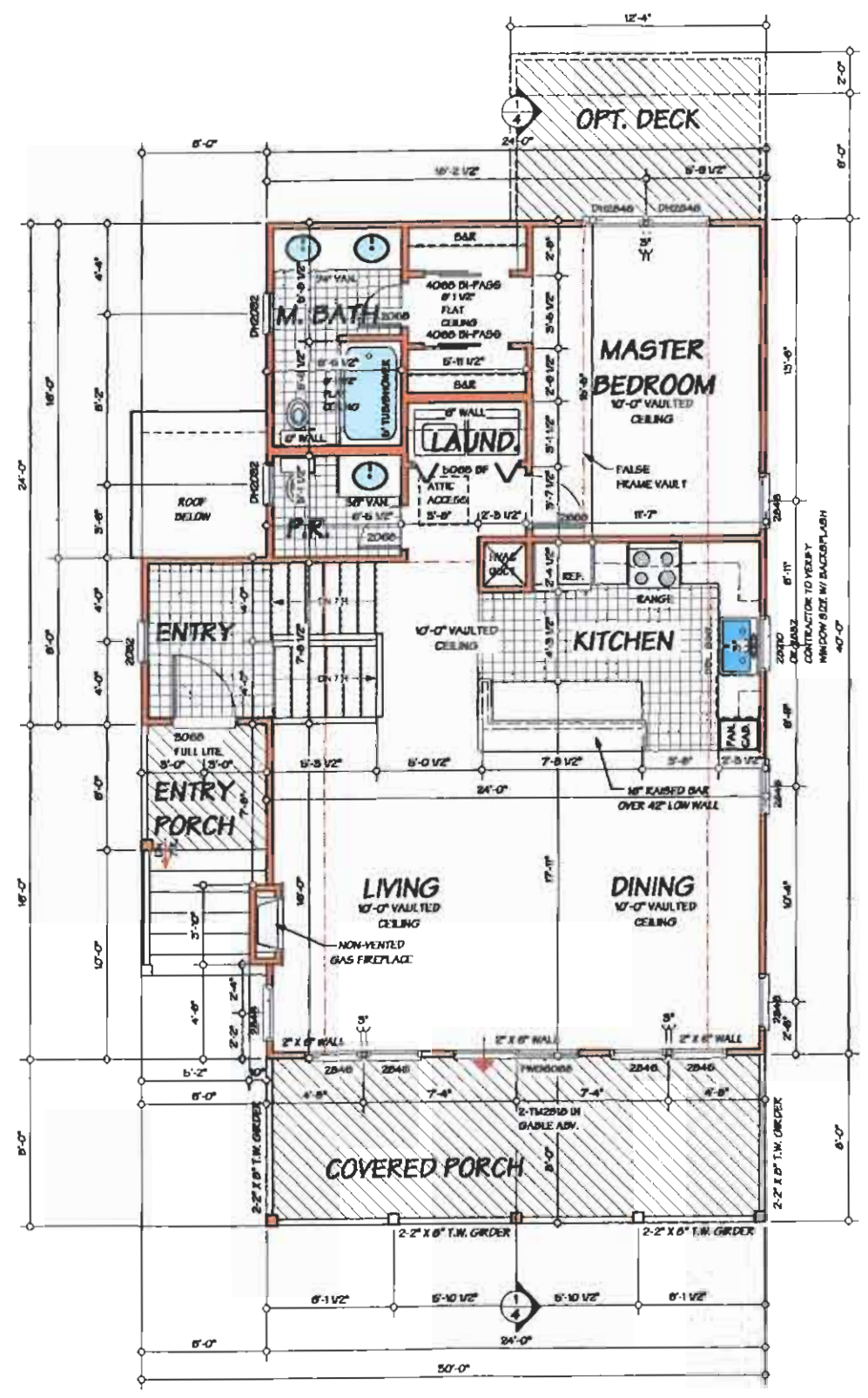
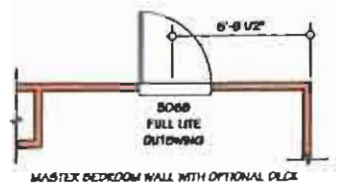
**REAR ELEVATION**  
SCALE: 1/4" = 1'-0"



**LEFT SIDE ELEVATION**  
SCALE: 1/4" = 1'-0"



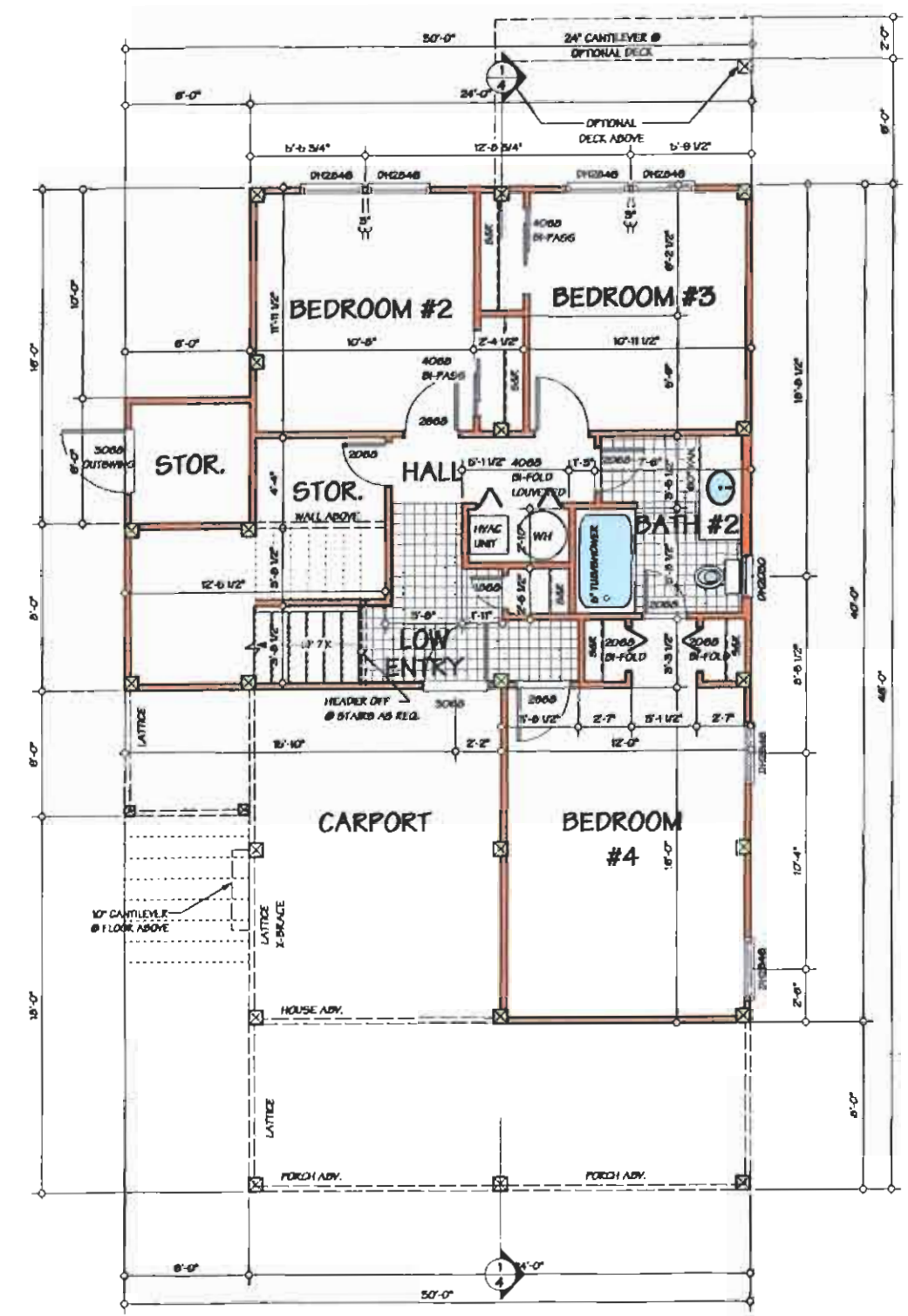
**FRONT ELEVATION**  
SCALE: 1/4" = 1'-0"



FIRST FLOOR PLAN

SCALE: 1/4" = 1'-0"

- WINDOW & DOOR NOTES:
1. ALL WINDOWS ARE BY ANDERSEN AND SLIDING EXTERIOR DOORS ARE BY ANDERSEN. THE ENTRY & OTHER HINGED DOORS ARE BY THERMA-TELL. CONTRACTOR IS RESPONSIBLE FOR VERIFYING ROUGH OPENING DIMENSIONS & ACTUAL UNIT SIZES & QUANTITIES.
  2. CONTRACTOR IS RESPONSIBLE FOR ALL WINDOW COLOR SELECTIONS & ACCESSORIES.
  3. ANDERSEN NARROWLINE P-HUNG UNITS ARE SHOWN UNLESS OTHERWISE NOTED. IT IS THE CONTRACTOR'S RESPONSIBILITY TO VERIFY CODE COMPLIANCE FOR ALL WINDOWS & DOORS.
  4. TO ACHIEVE THE DPMO RATING: USE THE STANDARD PRODUCT WITH A SURFACE MOUNTED SASH LOCK USING A 1/2" X 1/2" SILL STOP (OR STOOL) AND THE ADDITION OF A 1/2" X 1/2" DP46 SILL STOP. (SILL STOP TOTAL A 1 1/4" HEIGHT & REQUIRE THE INSTALLATION OF A SPECIAL SASH LIFT INCLUDED WITH THE DP46 SILL STOP KIT).
  5. TEMPERED GLASS UNITS ARE TO BE USED AS PER CODE REQUIREMENTS. IT IS THE CONTRACTOR'S RESPONSIBILITY TO VERIFY TEMPERED GLASS LOCATIONS.
  6. ALL BEDROOMS TO HAVE A MIN. OF 1 WINDOW OR DOOR MEETING THE N.C. EGRESS CODE REQUIREMENTS. CONTRACTOR TO VERIFY.
  7. ALL WINDOWS ARE TO BE AT 8'-0" HEAD HEIGHT UNLESS OTHERWISE NOTED.
- GENERAL NOTES
1. ALL ANGLED WALLS ARE TO BE BASED ON <math>90^{\circ}</math> DEG. OR <math>45^{\circ}</math> DEG. WHERE APPLICABLE. UNLESS OTHERWISE NOTED.
  2. AT ALL BATHROOMS PROVIDE WATER RESISTANT GYP OR CEMENTITIOUS PANELS.



GROUND FLOOR PLAN

SCALE: 1/4" = 1'-0"